

GLO SURVEY PLAT 1893



Total number of Acres 6780.58 (Additional.)

Scale 40 Chains to an Inch.

Number of Surveys Ch ^s	When Surveyed	Mean Declination
22 65	June 5 th 1893	
25 16	June 6 th 1893	22° 39' E.
29 45		

The above Map of Township N. 25, 56 North of the Boise Meridian, Idaho, is a notes of the survey thereof on file in this Office, which has

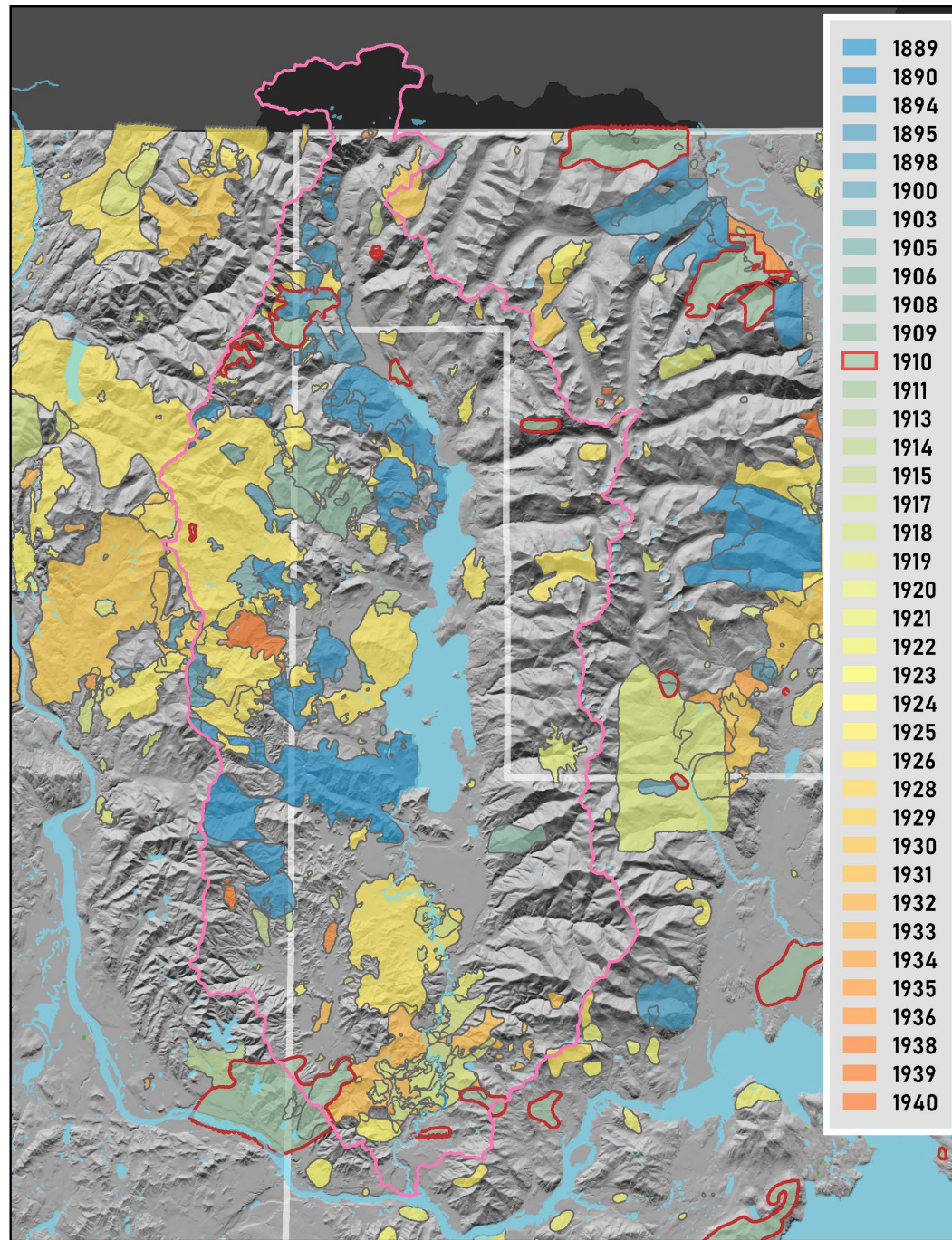




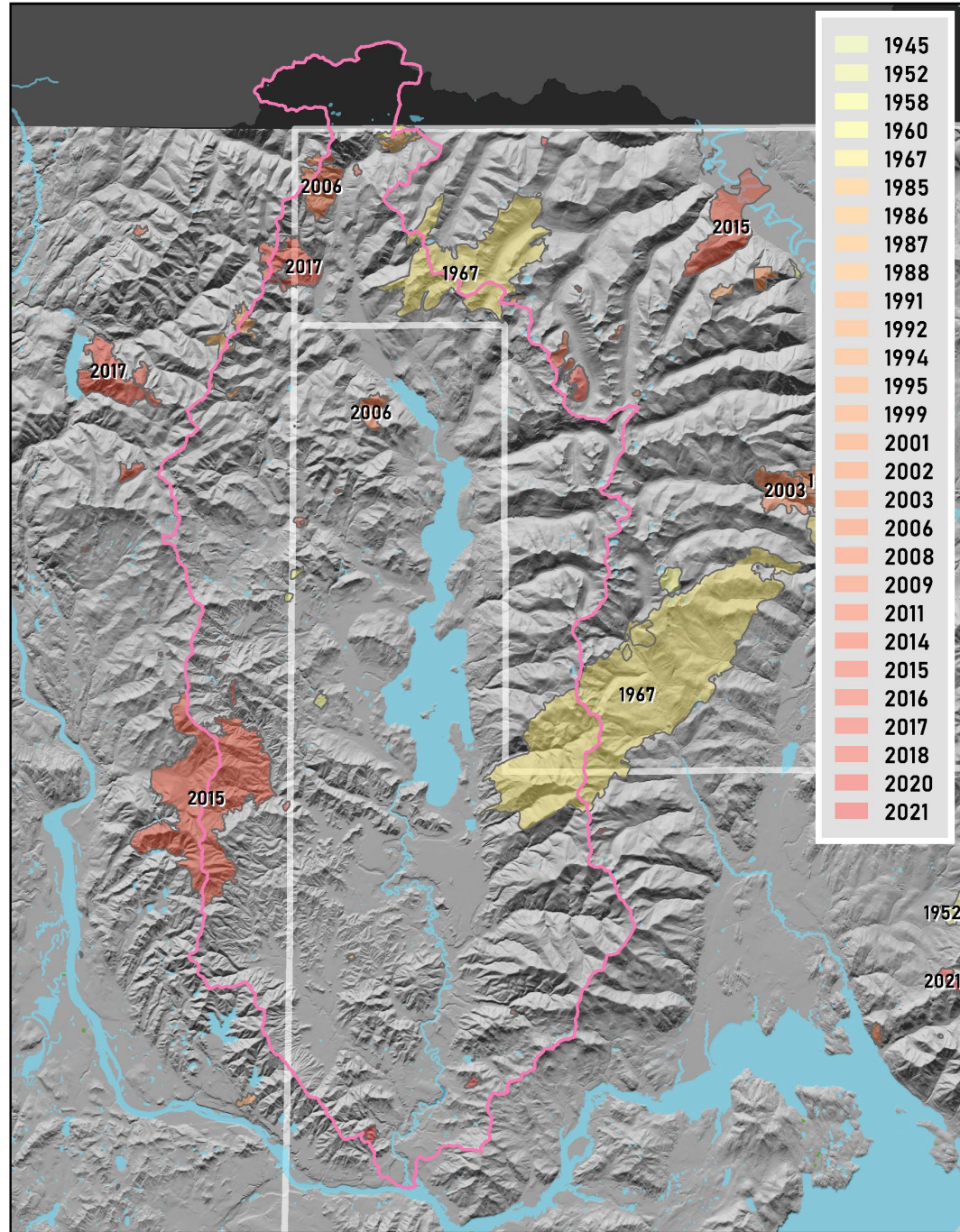
H-187 Priest River, Idaho at Confluence of Priest and Pend Oreille Rivers



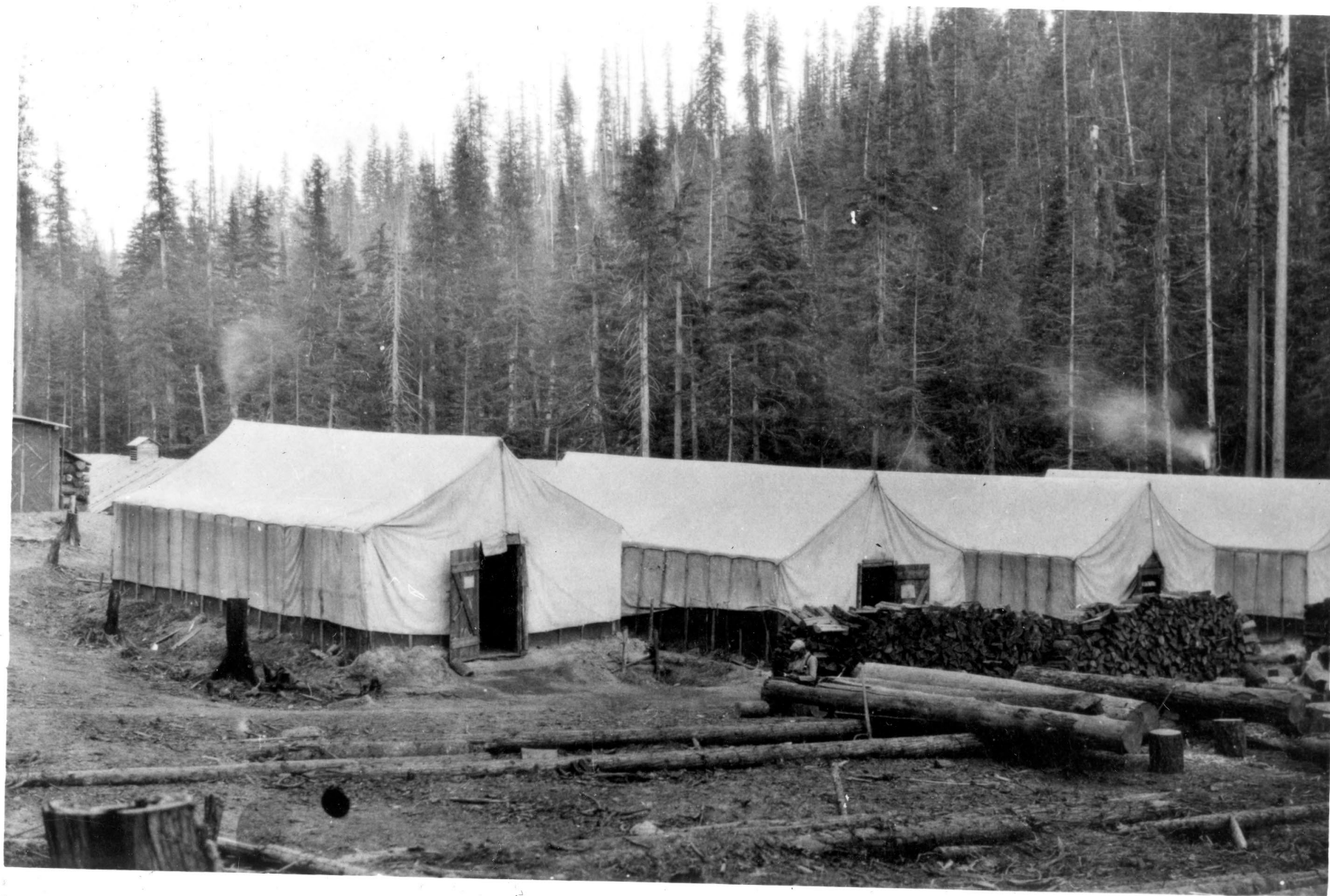
WILDLAND FIRE 1889-1940



WILDLAND FIRE 1941-2021







Diamond Match Co. Camp 6 -NE 24-36N-45E
'29 (Henry A. Peterson)







Winter trail chute - Beardmore Sale #1-2-23



Poles from C.W. Beardmore Sale '25 (JCW)











Gasoline Jammer-Diamond sale #10-26-26
7/29 (Henry A. Peterson)

PRIEST LAKE LOGGING RAILROADS



Ownership ca 1925

- Humbird Lbr. Co.
- Forest Service
- State of Idaho

Logging Camp

- Beardmore
- Dalkena
- Diamond
- Humbird

Logging Railroad

- Dalkena
- Diamond

Forest Fire 1889-1940

- JAG 3/10/23

R 05 W

R 04 W

T 61 N

T 60 N

T 59 N

T 61 N

T 60 N

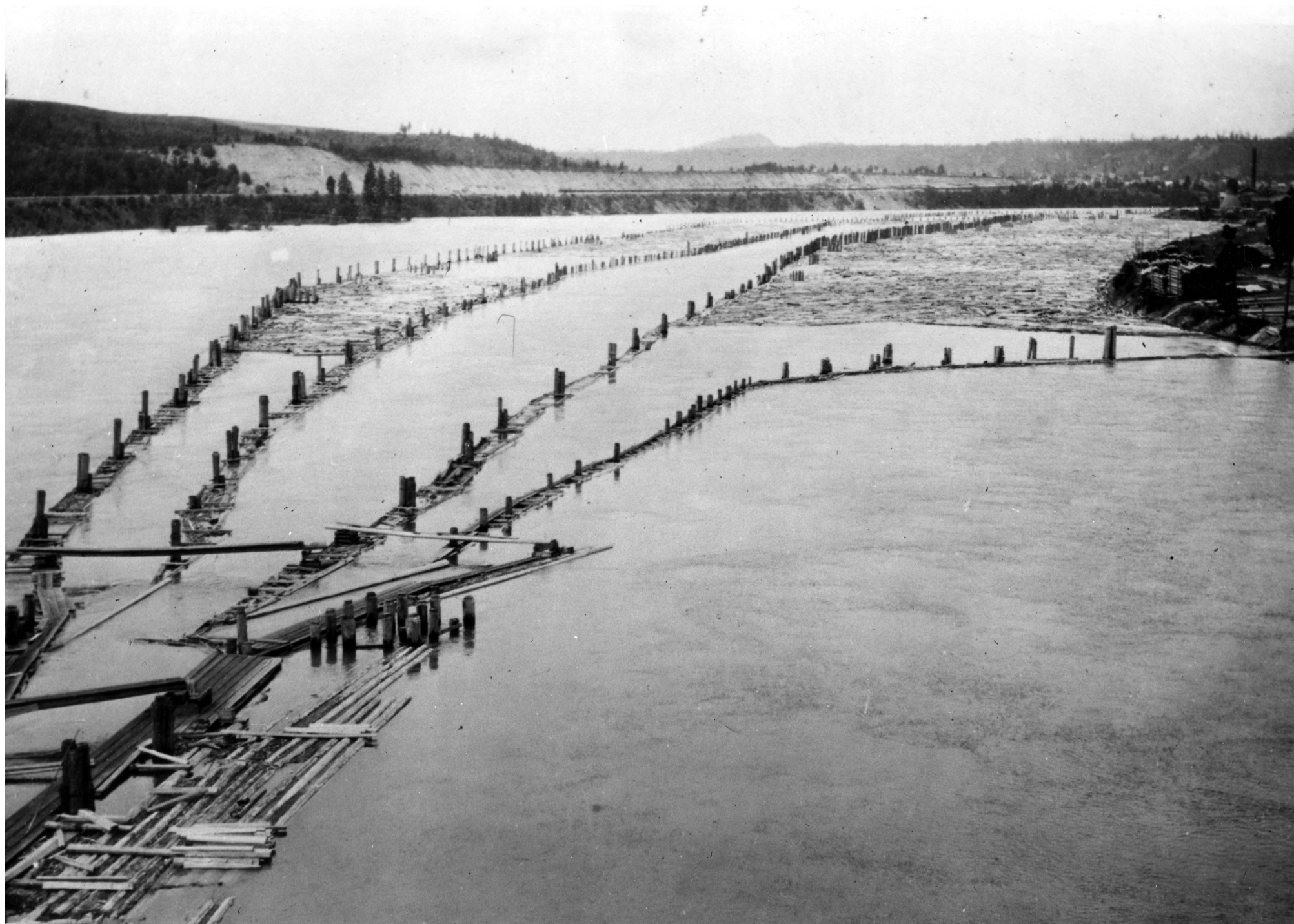
T 59 N

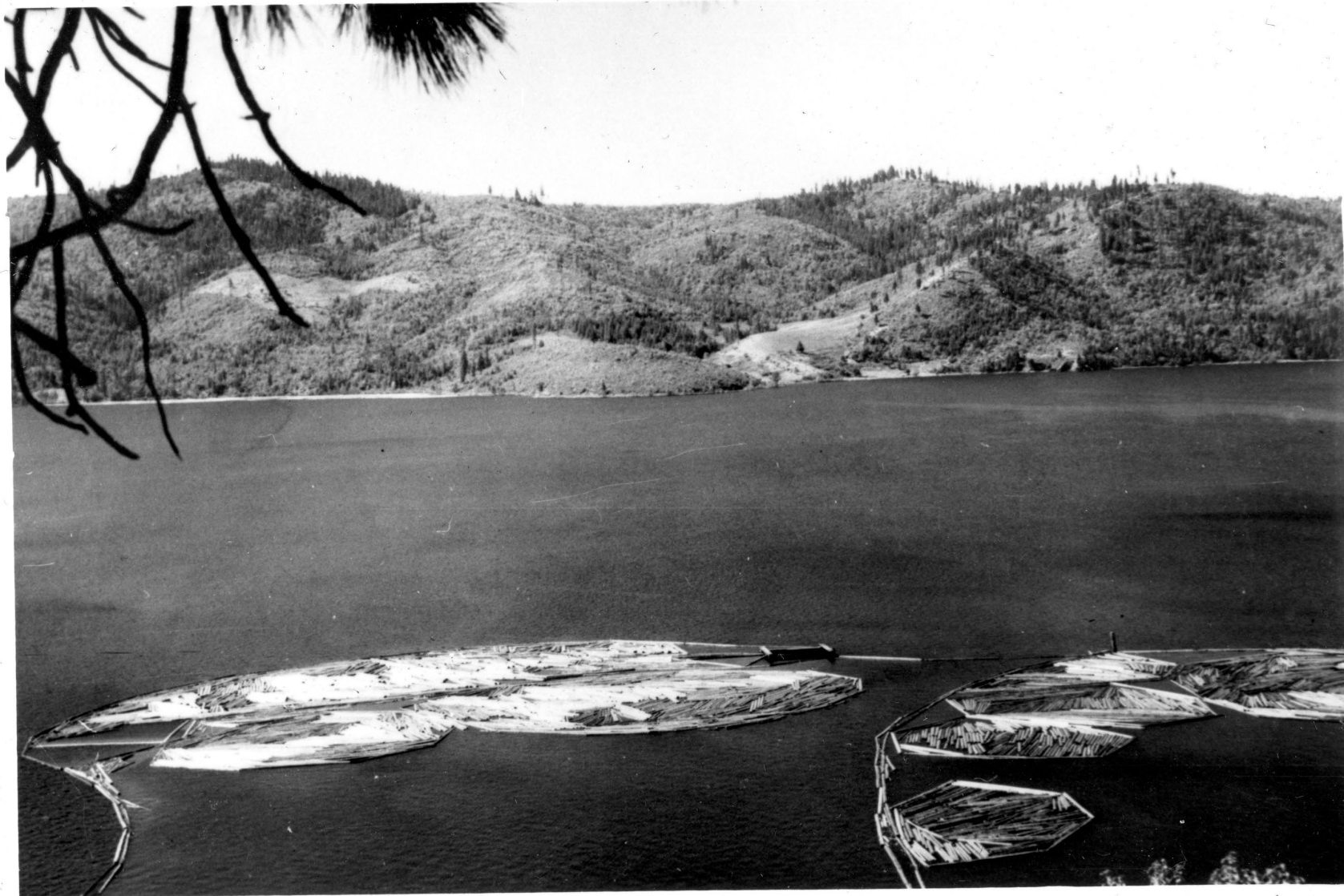
T 58 N





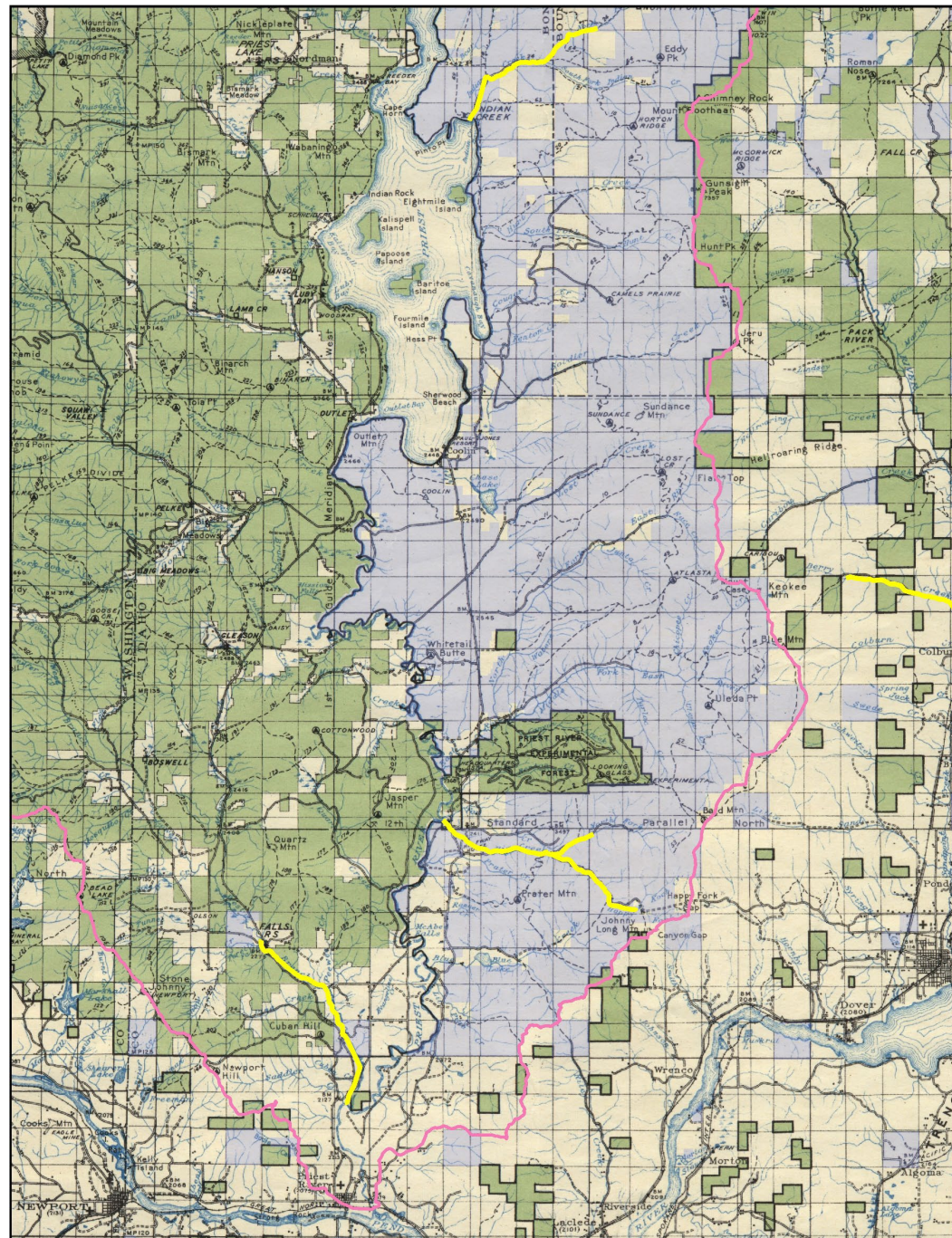
Logs in Priest Lake - prior to 1931





Log booms in Lake
(O.W. Gastineau)

FLUMES

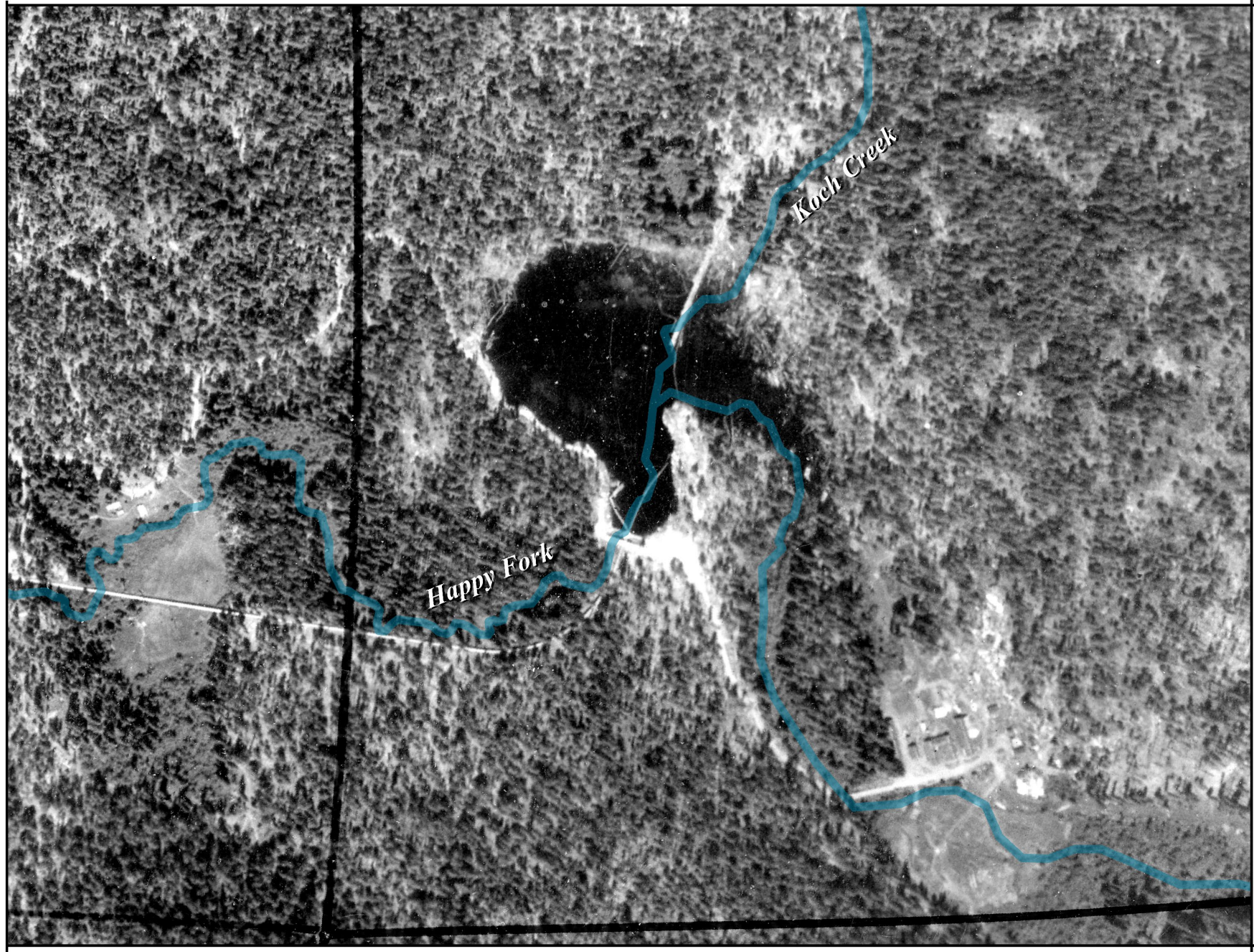




Flume, Big Creek Camp 2 '24 (DM)

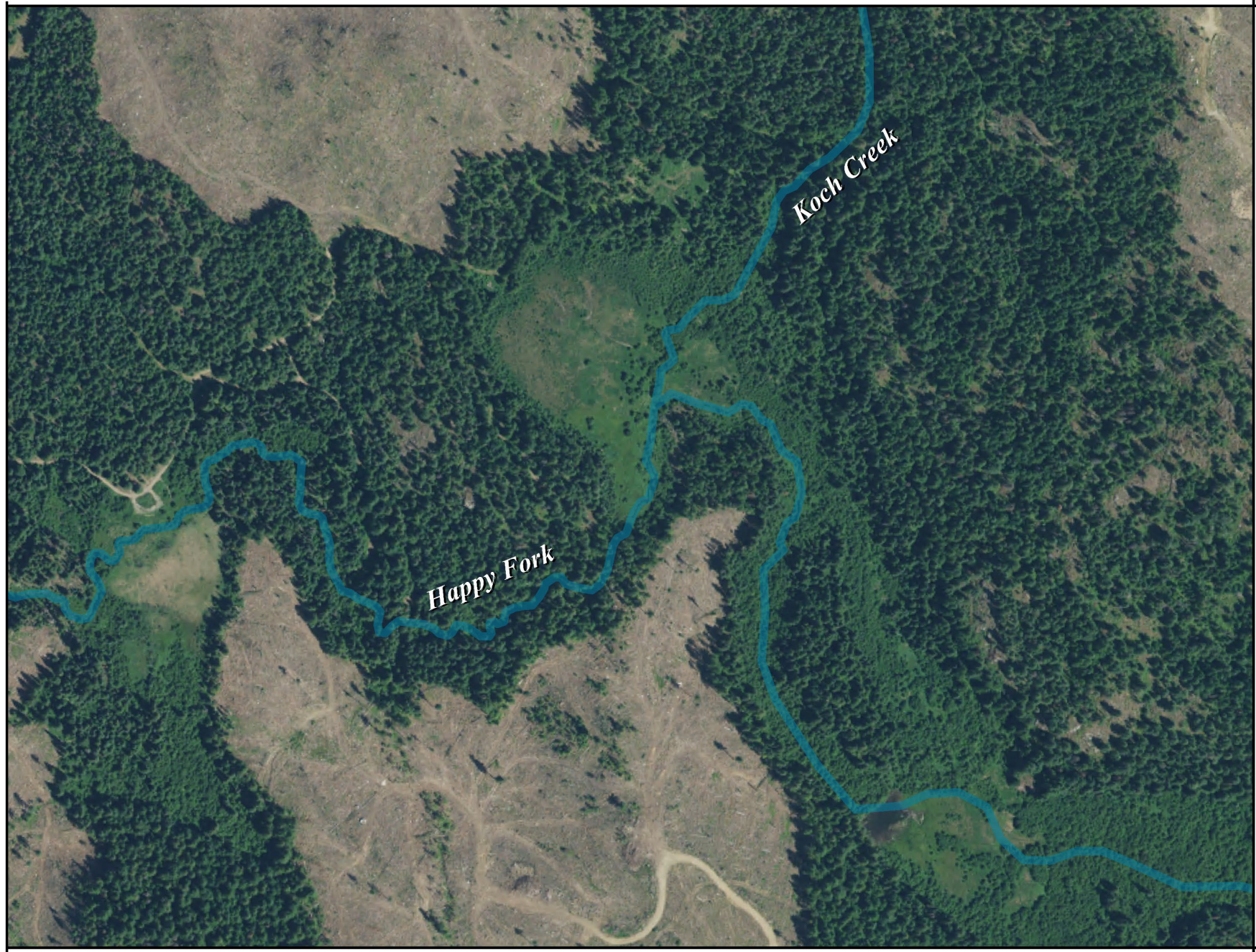


1935 BIG CREEK



T 57 N

R 03 W



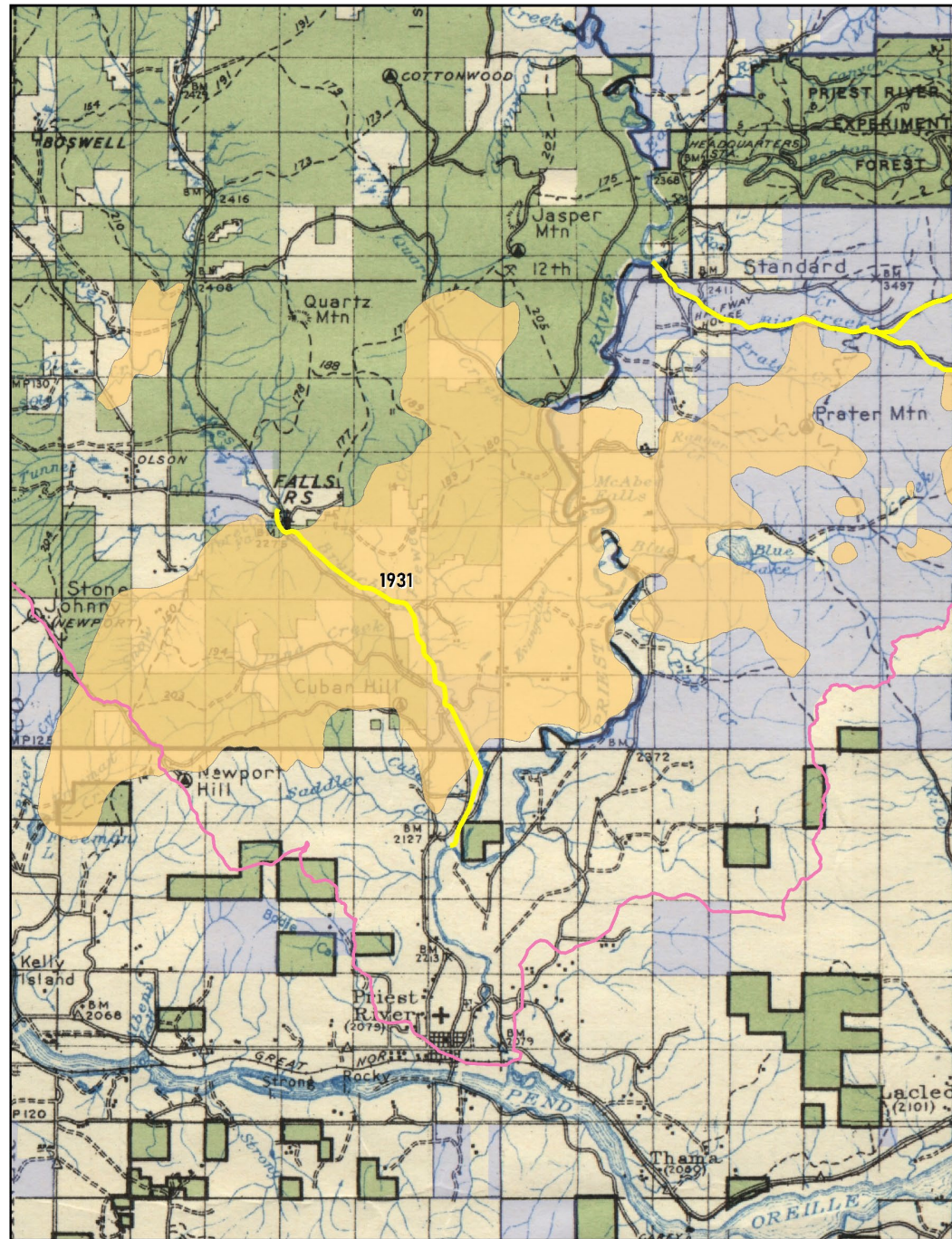
Koch Creek

Happy Fork

T 57 N

R 03 W

FLUMES





Log Drive '43 (Leo Black collection)



Landing on Lower West Branch - Section 8
Ione Lumber & Pole Co.



Rollway at Humbird Camp 19 '24 (W.G.M)



Log Drive '43 (Leo Black Collection)

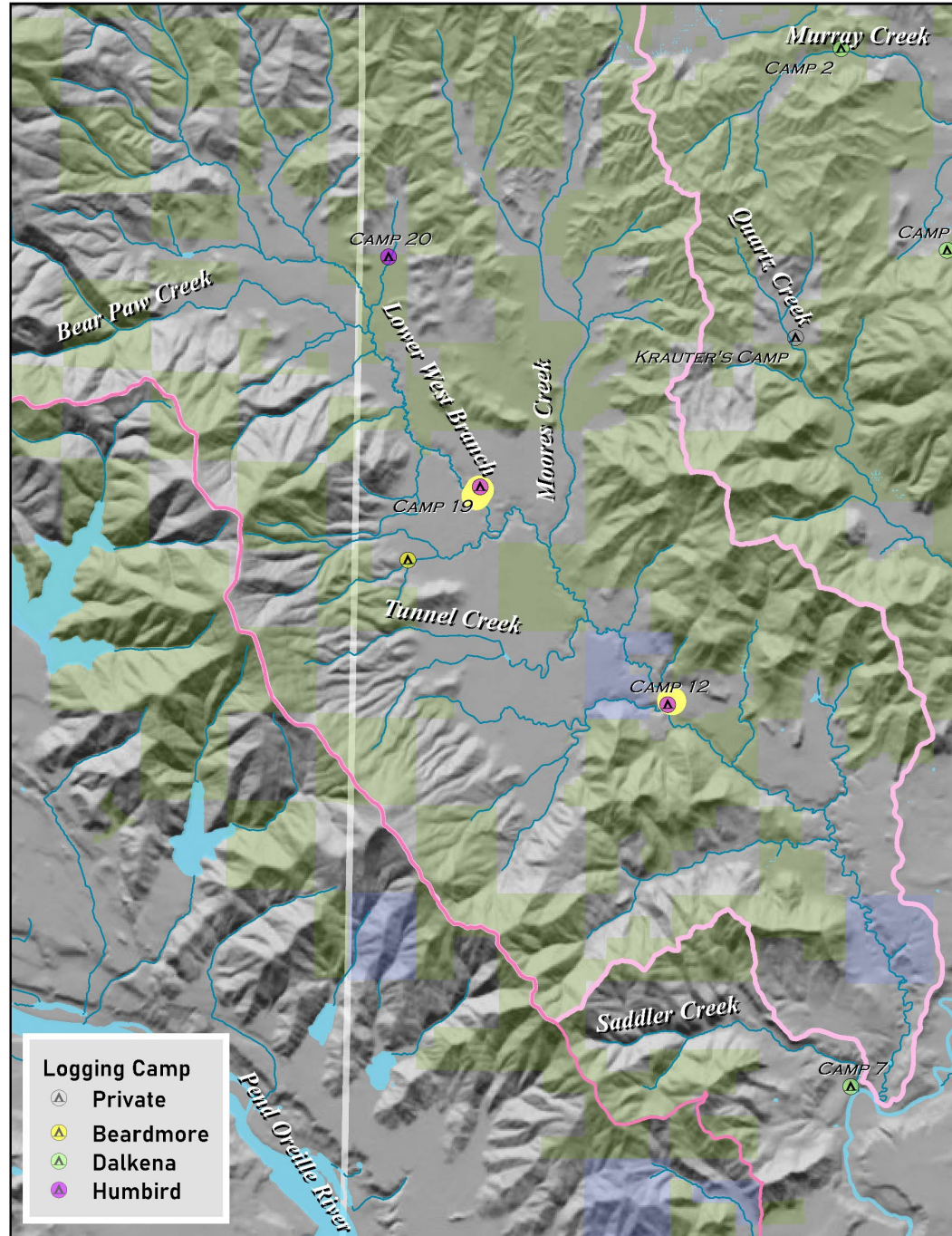


Humbird Dam at camp 19 3/25 (W.G.M)



Flowage-Beardmore-Lower West Branch
Dam '20 (RED)

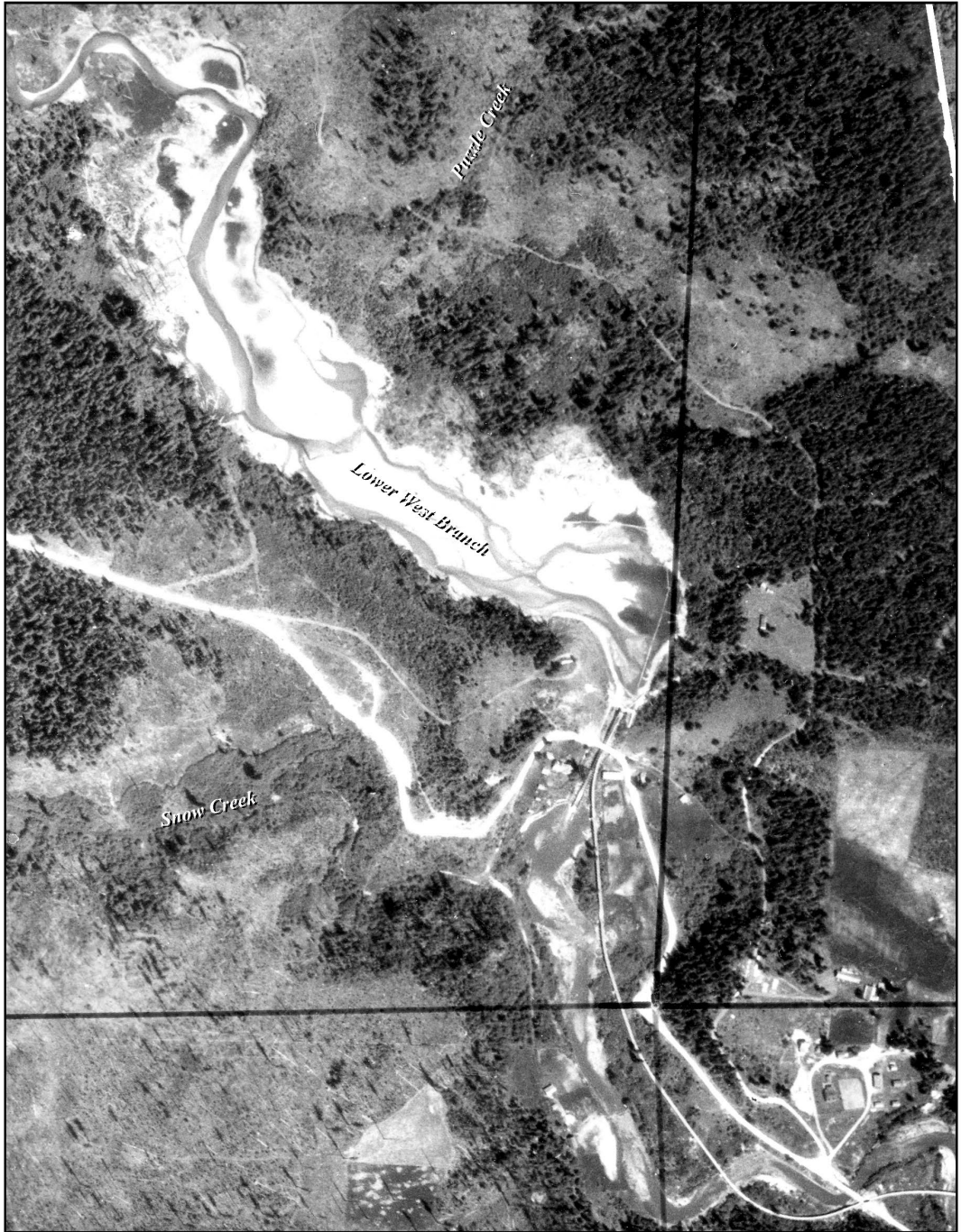
LOWER WEST BRANCH DAMS & CAMPS





Humbird Torrelle Falls Dam '26

TORELLE FALLS 1932





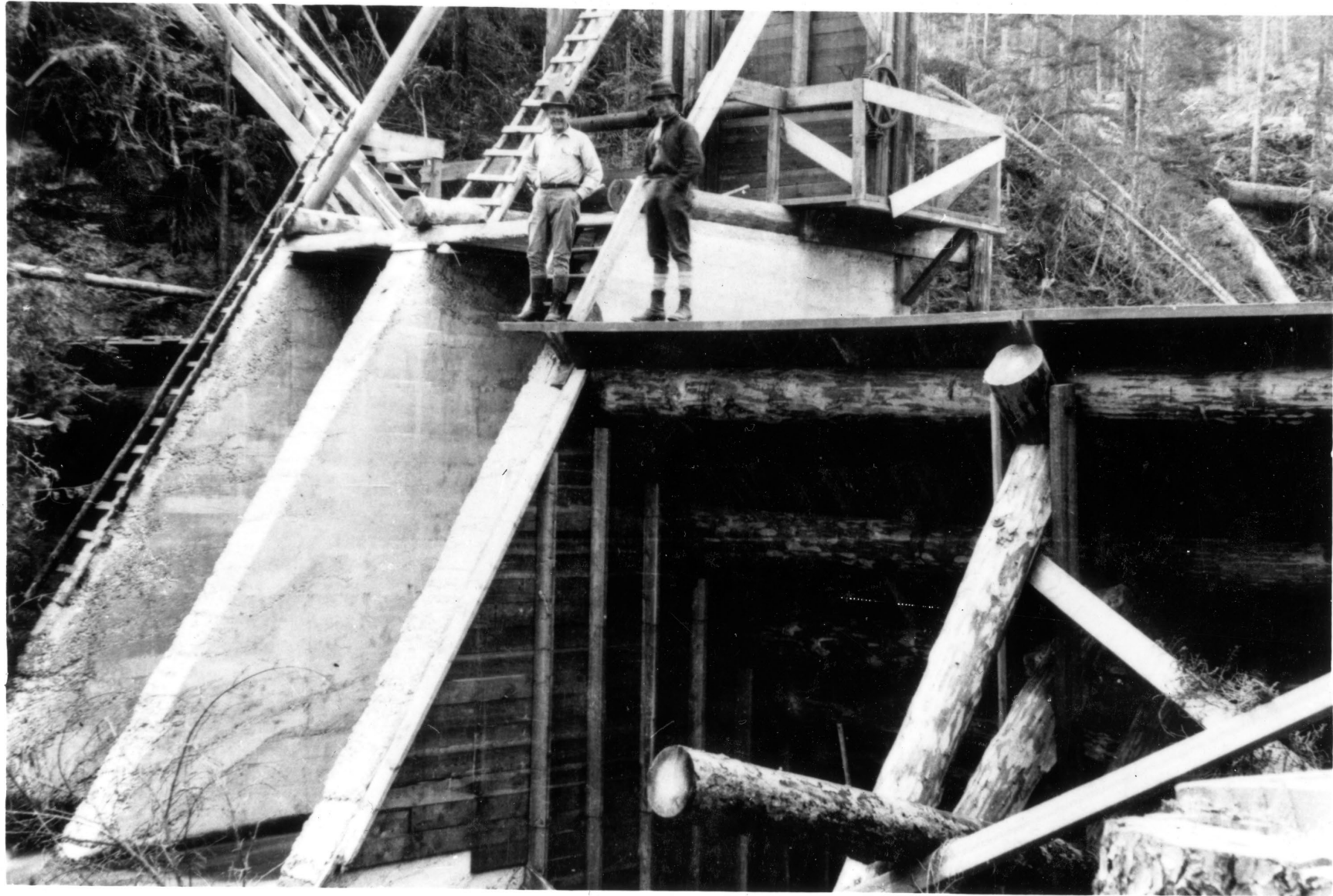
Breaking Rollways at Torrelle Falls
'20 (RED)



Humbird Camp 19 Rollways '24 (W.G.M.)



Dalkena Sluice Dam '23 (S.S.L)



Sluice Dam, Dalkena Camp 6 '23 (R.E.D)



Chuting near Camp 2 - Big Creek-

'24 (T Baker)



