

Management, Projects, and Sampling in the East River Basin

Idaho Department of Lands
Priest Lake Supervisory Area

Presentation by Colton Finch, Resource Specialist
(biologist)









SLOW DOWN
YOU
SONS A BITCHES

CAMP
FISHAW
2011













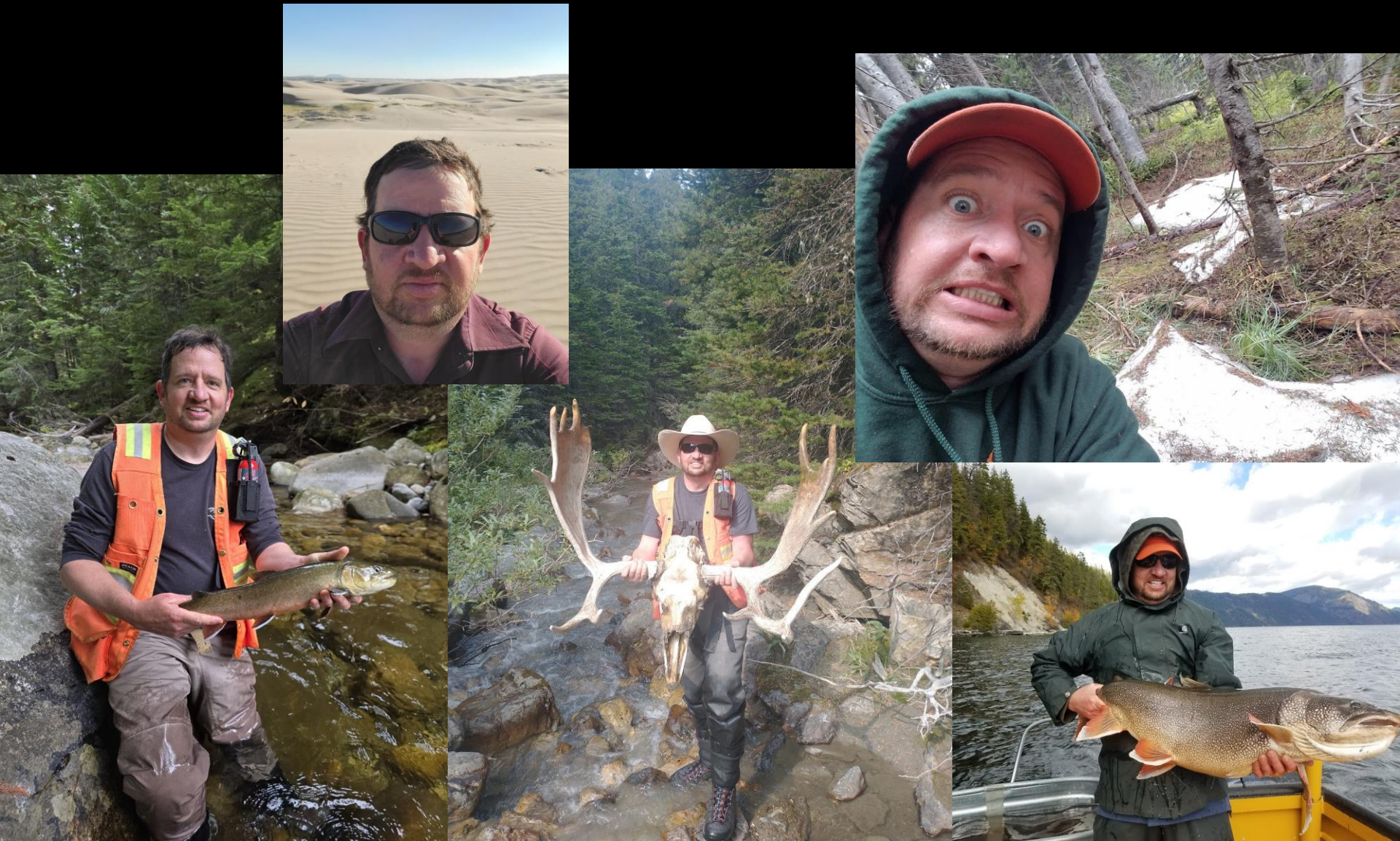
Who is Idaho Department of Lands?

- State agency tasked with regulation of:
 - Mining and minerals
 - Navigable waterways
 - any stream which, in its natural highwater condition, will float logs or any other commercial or floatable commodity, or is capable of being navigated by oar or motor propelled small craft for pleasure or commercial purposes
 - Encroachment permits
 - Submerged land leases

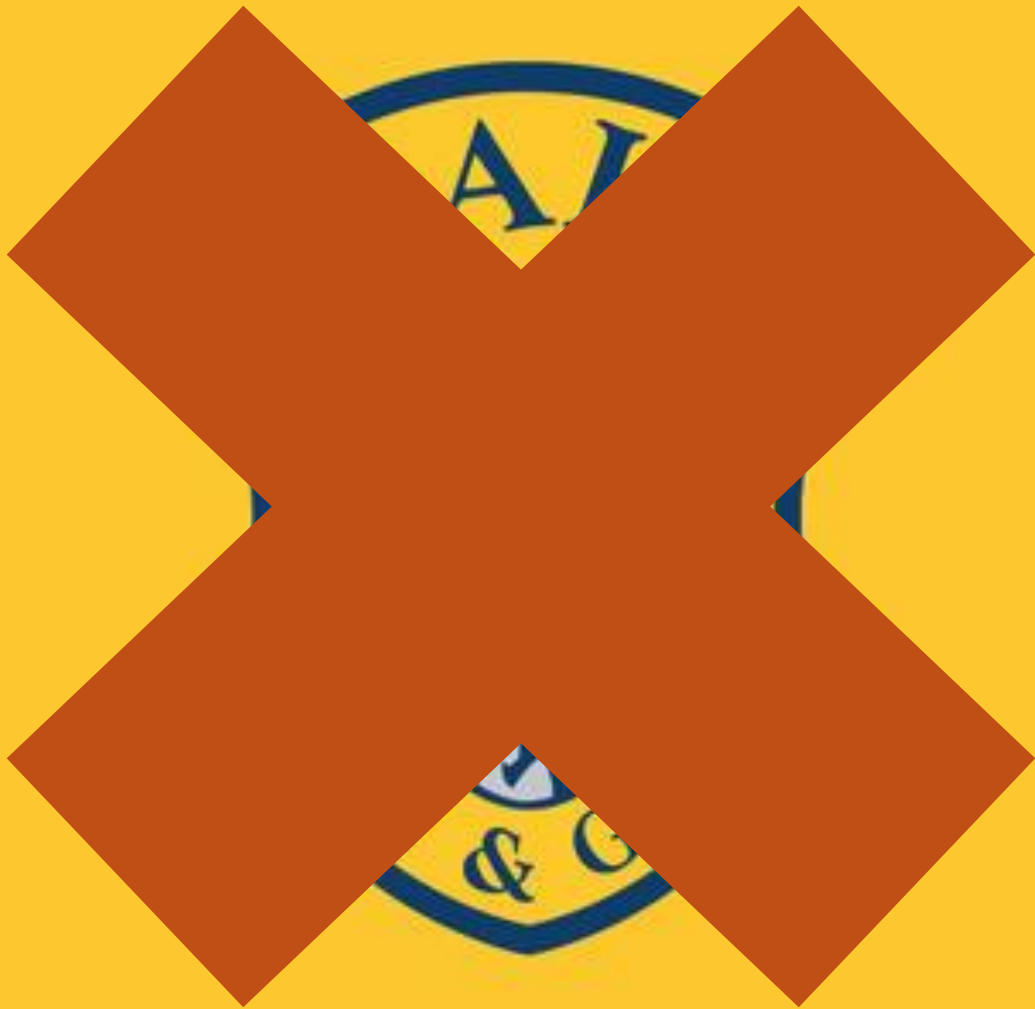
Who is Idaho Department of Lands?

- State agency tasked with generating revenue on state endowment trust land
 - Around 3 million acres of Idaho
 - Majority of revenue is generated via timber sales
 - ~\$100,000,000 per year
- Who are the endowment beneficiaries
 - Idaho Public Schools (85%)
 - Hospitals, Universities

Who am I? THE biologist





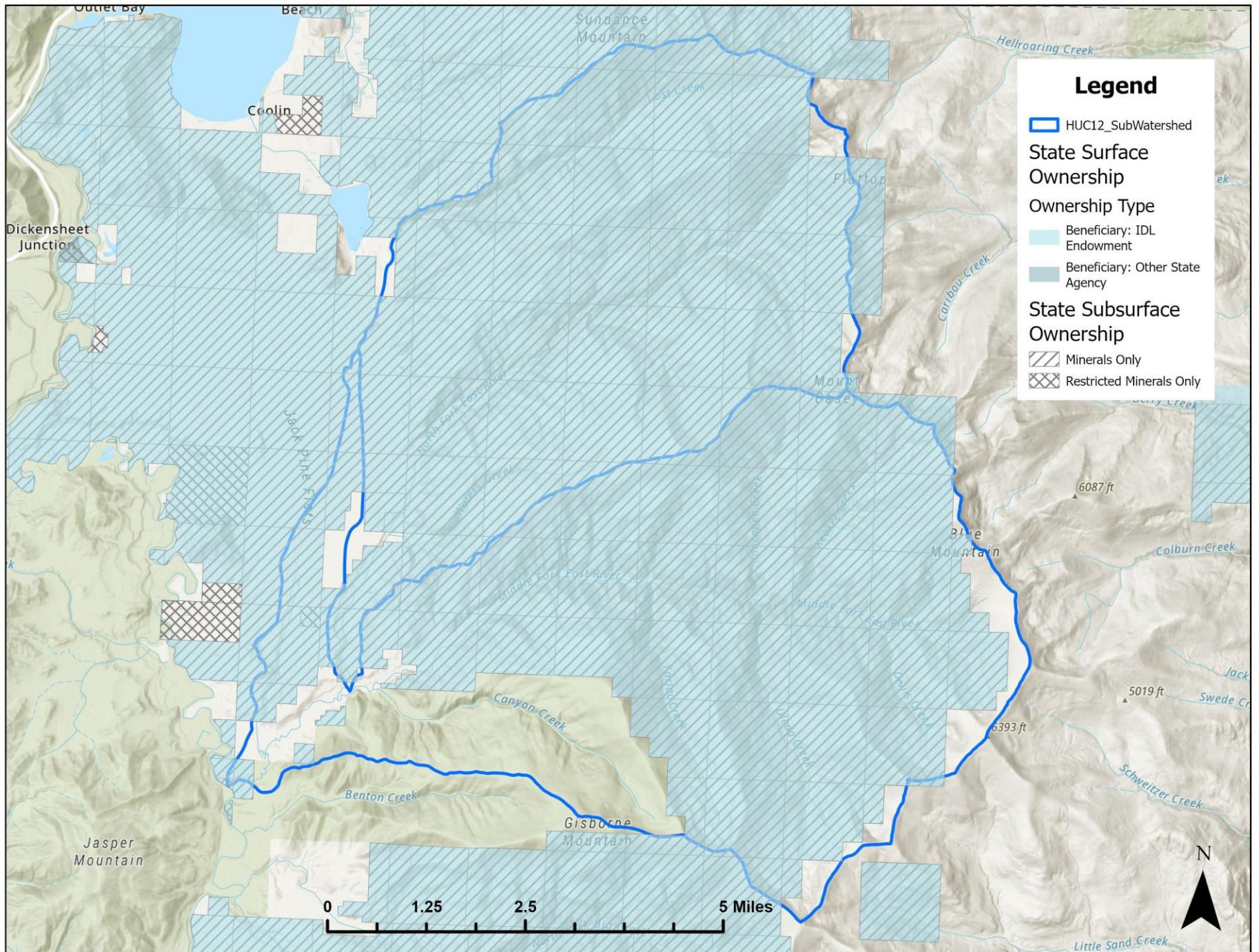


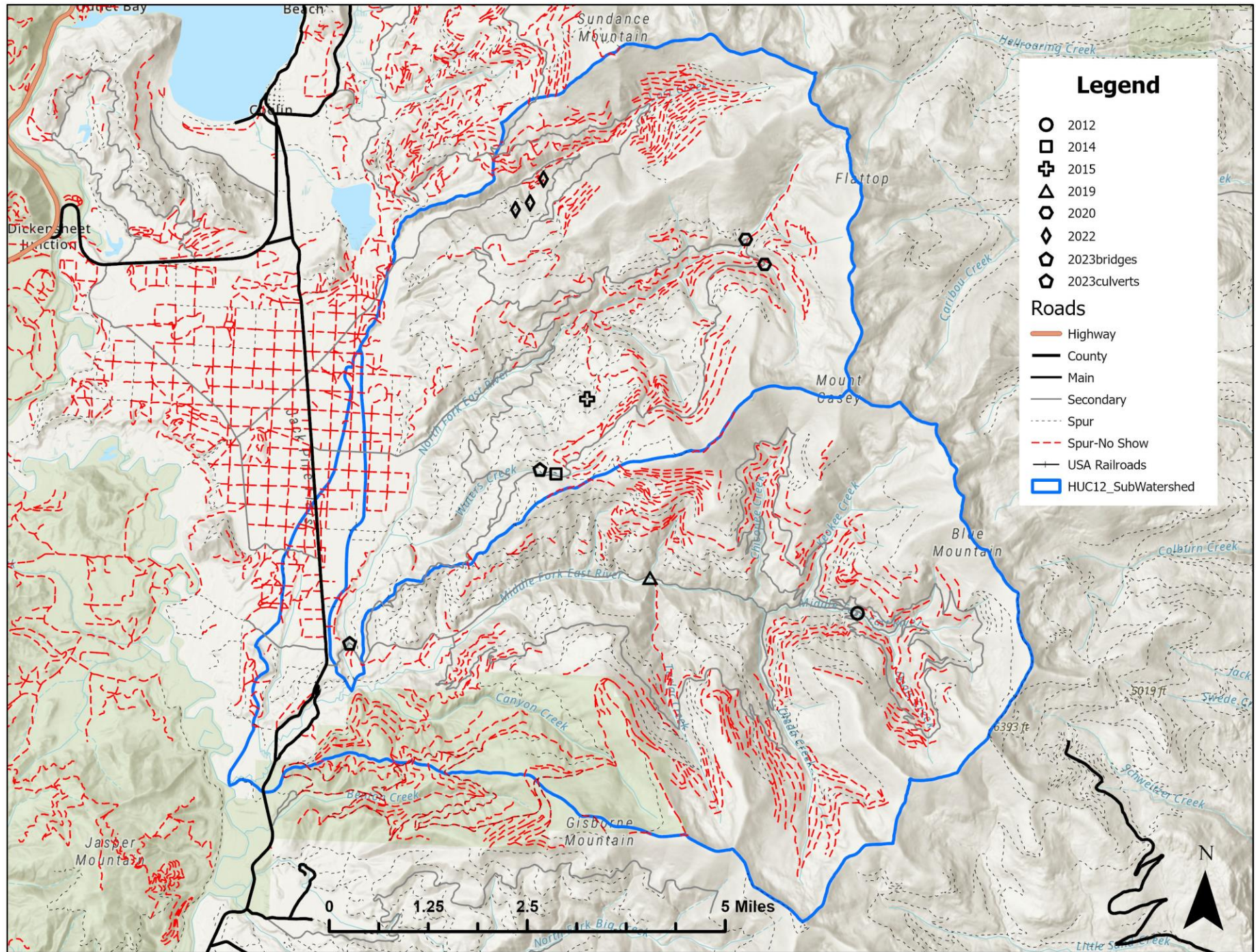
Ownership in East River basin

- Predominantly state endowment trust land

| Row Labels | Sum of GIS_Acres | Percent |
|--------------------------------|------------------|------------|
| BLM | 182.1 | 0.42 |
| Manulife Investment Management | 139.1 | 0.32 |
| Molpus | 0.2 | 0.00 |
| PRIVATE | 1,879.7 | 4.31 |
| STATE | 37,971.7 | 87.08 |
| USFS | 3,430.4 | 7.87 |
| Grand Total | 43,603.1 | 100 |

| Row Labels | Sum of GISACRES | Percent |
|--|-----------------|------------|
| 100.00% General Fund | 27.8 | 0.073 |
| 100.00% Public School (Indemnity, Schools, Common Schools) | 37,825.4 | 99.615 |
| 100.00% University of Idaho | 118.4 | 0.312 |
| Grand Total | 37,971.7 | 100 |





Legend

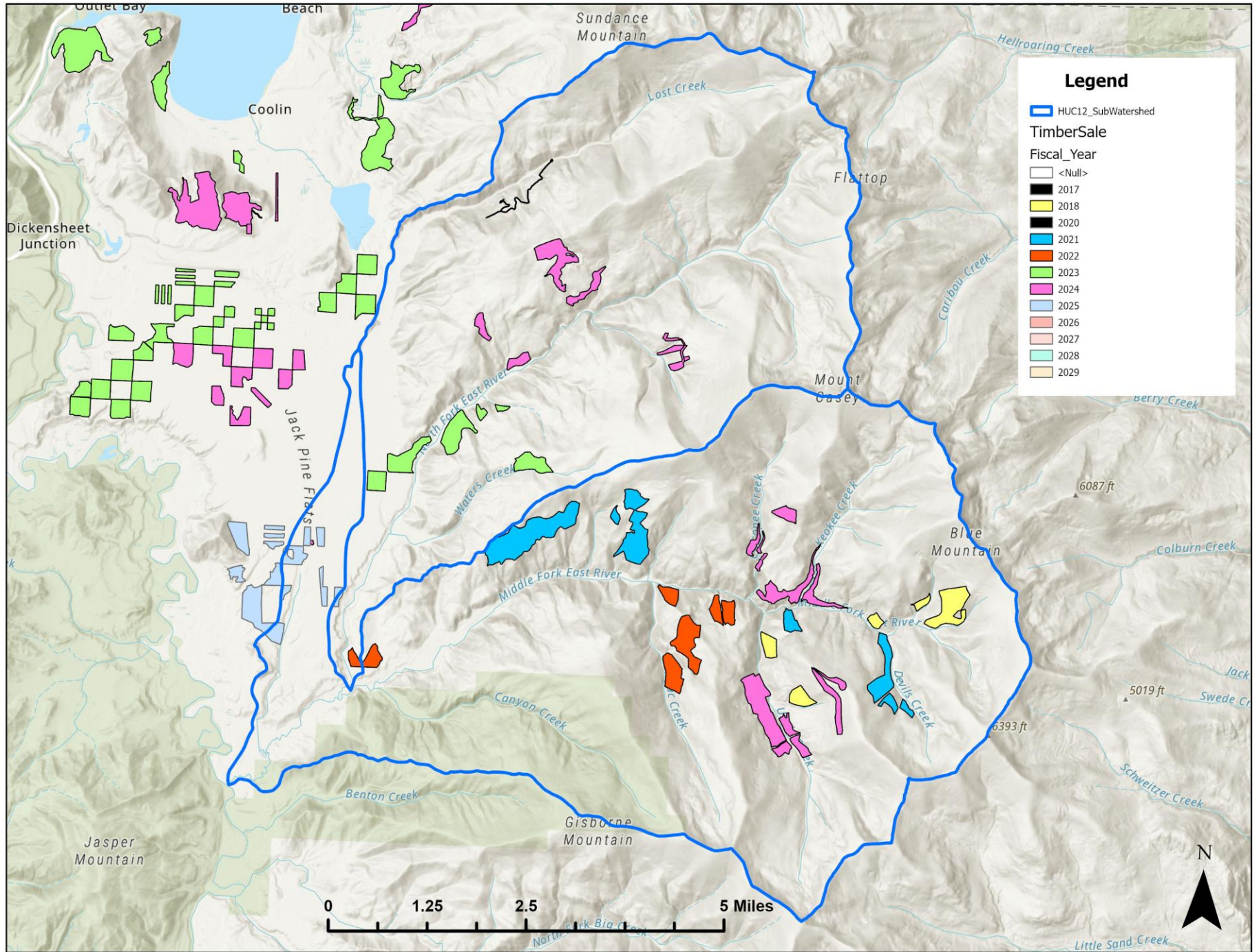
- 2012
- 2014
- ⊕ 2015
- △ 2019
- ⊙ 2020
- ◇ 2022
- ⬠ 2023bridges
- ⬡ 2023culverts

Roads

- Highway
- County
- Main
- - - Secondary
- ⋯ Spur
- - - Spur-No Show
- + USA Railroads
- ▭ HUC12_SubWatershed

0 1.25 2.5 5 Miles





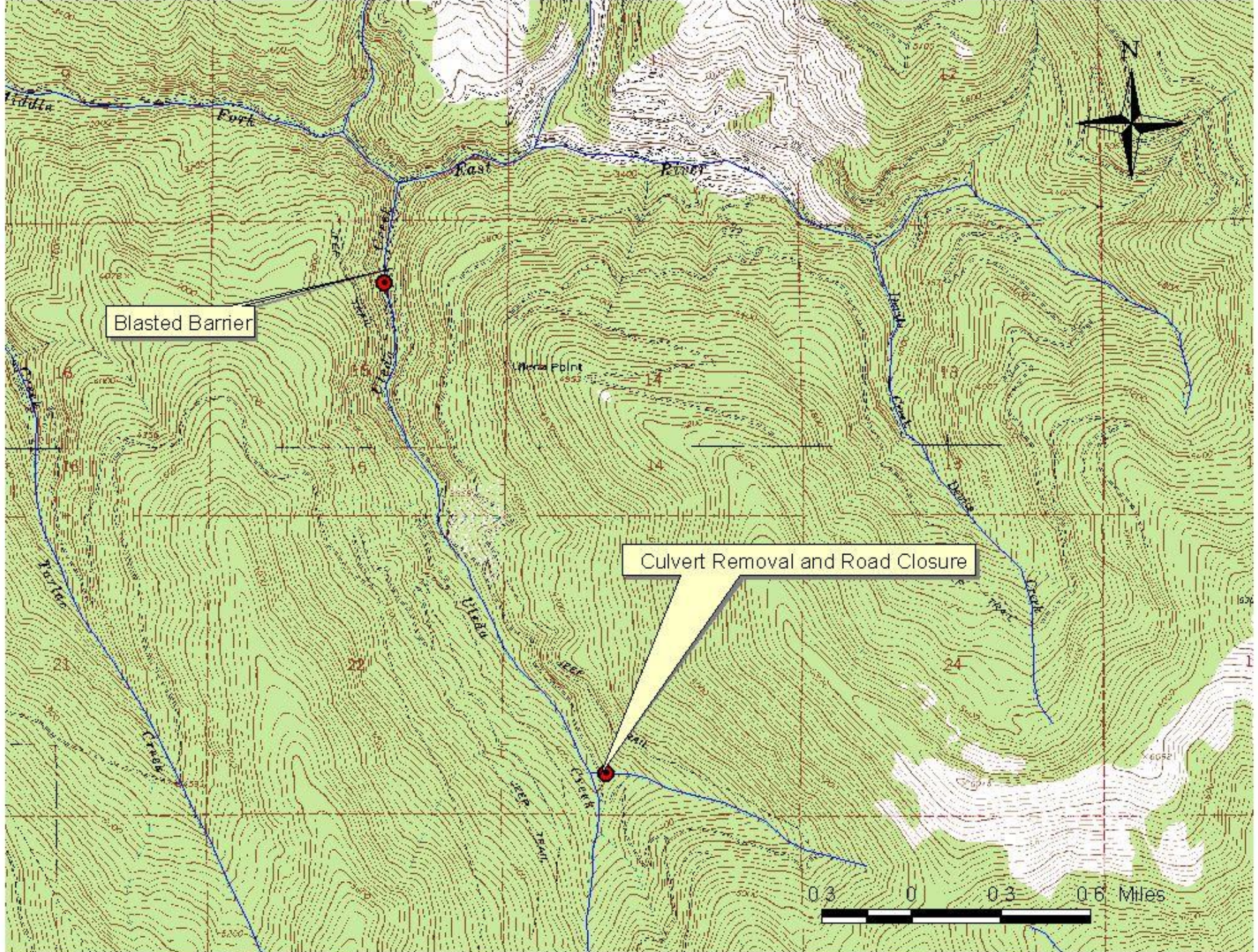
Projects in the East River basin

- Temperature monitoring



Projects in the East River basin

- Uleda Creek barrier removal



Blasted Barrier

Culvert Removal and Road Closure

0 0.3 0.6 Miles



8/20/2002



8/2/2004



8/2/2004

Projects in the East River basin

- Uleda Creek barrier removal

| Company | Work Completed to Date | Cost |
|--|---|-------------------|
| Specialty Construction, Inc. | Uleda Creek Barrier Blasting | \$4,999.99 |
| Elliot Environmental Hydroseeding | Erosion Control at Blasting Site | \$400.00 |
| Newport Equipment Enterprises, Inc. | Culver Removal and Closure of a Section of Road 103 | \$672.50 |
| Tree Planting | Cedars will be planted in 2006 | \$200.00* |
| | Total Expenditures as of April 12, 2006 | \$6272.49 |

Projects in the East River basin

- Long-term population monitoring
 - 14 sites throughout Idaho
 - Includes Middle Fork East River

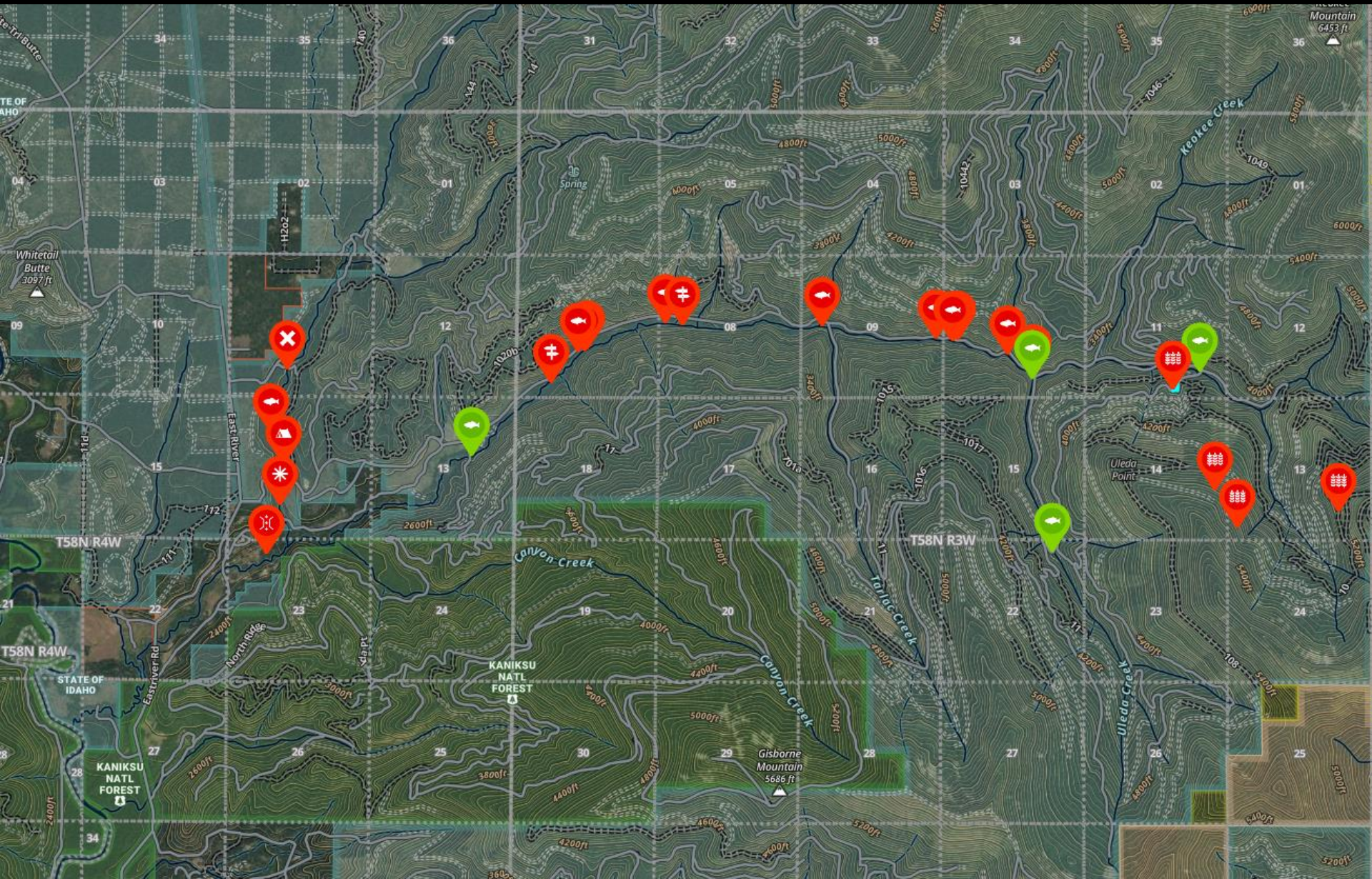






Projects in the East River basin

- Redd Counts
 - Managed by USFWS on East River
 - North Fork East River in 2023









Management, Projects, and Sampling in the East River Basin

Idaho Department of Lands
Priest Lake Supervisory Area

Presentation by Colton Finch, Resource Specialist
(biologist)

